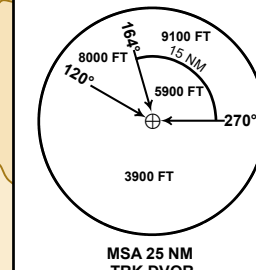


TURKISTAN
LOC/DME
RWY 23



ALT/HEIGHT CONVERSION	
QNH	(QFE)
6000	(5011FT - 1527m)
4000	(3011FT - 918m)
3000	(2011FT - 613m)
2000	(1011FT - 308m)

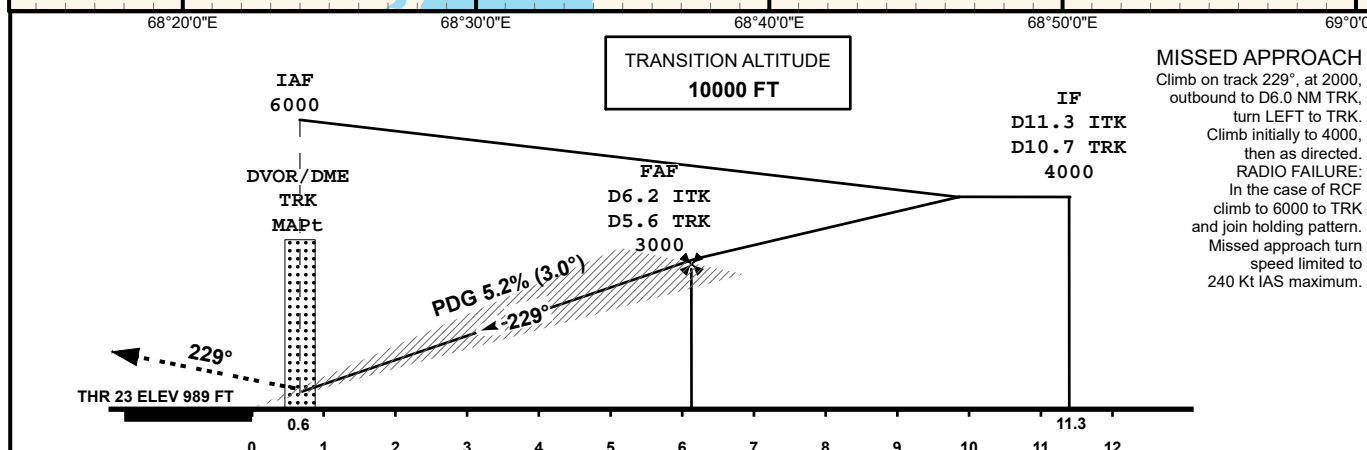
NOTE - Procedure is not available without DME ITK

Alt SET: hPa (mm on req),
QNH (QFE on req)

SCALE 1:350000

3.5 7 10.5 KM

.5 3 6 NM



MISSED APPROACH
Climb on track 229°, at 2000,
outbound to D6.0 NM TRK,
turn LEFT to TRK.
Climb initially to 4000,
then as directed.
RADIO FAILURE:
In the case of RCF
climb to 6000 to TRK
and join holding pattern.
Missed approach turn
speed limited to
240 Kt IAS maximum.

Aircraft Category		A	B	C	D	DIST to THR DME ITK	NM	6.2	5.0	4.0	3.0	2.0	1.0
Straight-in Approach OCA/H						DME TRK	NM	5.6	4.4	3.4	2.4	1.4	0.4
	LLZ (GP INOP)	1410(420)				ALTITUDE	FT	3000	2630	2312	1993	1675	1356
						HEIGHT	FT	2011	1641	1323	1004	686	367
DME ITK ZERO RANGED TO THR RWY 23													
Aerodrome Operating Minima DH ft x RVR(CMV)	LLZ (GP INOP)												
						GS	Kt	80	100	120	140	160	180
						Desc.Rate(5.2%)	ft/min	420	530	630	740	840	950
						FAF-MAPt(5.6NM)	min:sec	3:45	3:00	2:30	2:08	1:52	1:40

CHANGE: Add ATIS, editorial.

TURKISTAN
LOC/DME RWY23

AERONAUTICAL DATA TABULATION

LOC/DME approach to RWY23 from TRK DVOR/DME	
Fix/point	Coordinates
TRK DVOR/DME	43° 19' 32.3"N 068° 34' 46.1"E
(IF) D11.3 ITK, D10.7 TRK	43° 25' 31.4"N 068° 46' 50.9"E
(FAF) D6.2 ITK, D5.6 TRK	43° 22' 40.0"N 068° 41' 04.4"E
THR RWY23	43° 19' 10.27"N 068° 34' 01.98"E
ITK LLZ	43° 18' 00.6"N 068° 31' 42.1"E